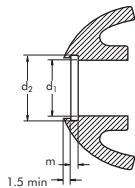
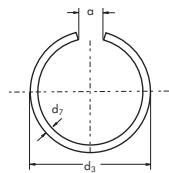


d <sub>1</sub>	DIN73130 SC	○					Groove			
		d <sub>7</sub>	Tolerance	d <sub>3</sub>	Tolerance	e	d <sub>2</sub>	Tolerance	m	Tolerance
10.0	SC10	0.8	±0.01	11.3	+0.5 -0.0	+0.5 -2.0 at d <sub>1</sub>	10.8	+0.2 -0.0	0.90	+0.1 -0.0
12.0	SC12	0.8		13.6			12.8		0.90	
14.0	SC14	1.0	±0.015	16.0	15.1		1.10			
15.0	SC15	1.0		17.1	16.1		1.10			
18.0	SC18	1.5	±0.02	20.7	19.7		1.60			
20.0	SC20	1.5		22.7	21.7		1.60			
22.0	SC22	1.5		24.8	23.7		1.60			
24.0	SC24	1.5		27.2	25.7		1.60			
25.0	SC25	1.5	±0.025	28.2	26.7		1.60			
26.0	SC26	1.5		29.4	27.7		1.60			
28.0	SC28	1.5		31.4	29.7	1.60				
30.0	SC30	2.0		34.0	32.4	2.10				
32.0	SC32	2.0	36.0	34.4	2.10					
35.0	SC35	2.0	39.0	37.4	2.10					



$$\alpha = 0.5 \begin{matrix} +1.5 \\ -0 \end{matrix}$$



DIN73130/SC

Add:L-2,FL21,INTL CONVENTION & EXHIBITION CENTER BUILDING,NB P.R.CHINA Tel:+86-574-87714998, +86-574-87714118  
 Fax:+86-574-87714808 E-mail:sales@nb-speedtrading.com Http://www.nb-speedtrading.com MSN:shelllee\_fu@hotmail.com